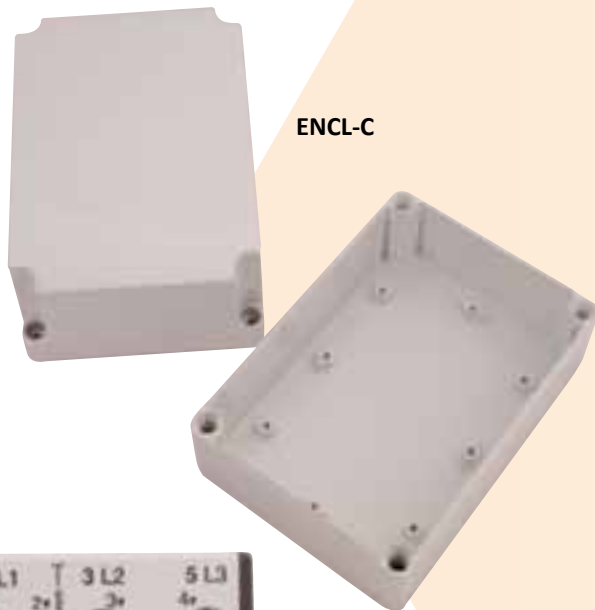


# CON Contactors

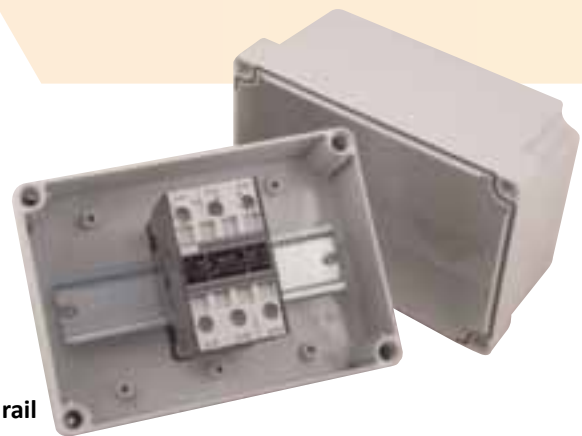
Contactors allow a thermostat or similar switching device to switch large single phase or three phase loads.

(230V coil – resistive loads only)



CON-50-3

CON-50-3 mounted in ENCL-C enclosure on DIN rail



CONTROLS

## Contactors - Specifications

Model	Phases	Amperage/Phase	Max kW/Phase	Enclosure Type
CON-20	1	20	4.4	A
CON-40	1	40	7.8	B
CON-63	1	63	12	B
CON-30-3	3	30	6	C
CON-45-3	3	45	9.8	C
CON-80-3	3	80	16	D
CON-110-3	3	110	23	D
ENCL-A	Contactor Enclosure Type A			
ENCL-B	Contactor Enclosure Type B			
ENCL-C	Contactor Enclosure Type C			
ENCL-D	Contactor Enclosure Type D			